

2026 Meetings, Events & Group Tour Information

CambridgeUSA.org
[@CambridgeUSA](https://twitter.com/CambridgeUSA)

[Candice Beaulieu](mailto:CBeaulieu@CambridgeUSA.org), Executive Director
CBeaulieu@CambridgeUSA.org

CAMBRIDGE CAMBRIDGE CAMBRIDGE CAMBRIDGE CAMBRIDGE

OFFICE FOR TOURISM

Welcome to Cambridge, Massachusetts!

Host your meeting or schedule your group outing in Cambridge, where Old World meets New Age in a mesmerizing blend of history and technology!

- <8 miles from Boston Logan International Airport
- <3 miles from Downtown Boston
- 3,900+ hotel rooms, the region's largest hotel inventory outside Boston
- 154,800+ square feet of meeting space available
- 325+ restaurants ranging from gourmet burgers, innovative fusion cuisine, and James Beard Award winning Chefs

Motivate event attendees by hosting your meeting in the birthplace of higher education. Cambridge is home to both Harvard University and the Massachusetts Institute of Technology (MIT), with both schools offering year-round public tours of their iconic and historic campuses and fascinating world-renowned museums meant to inspire. Packed with youthful vitality and international flair, and located just on the other side of the Charles River from Boston, Cambridge is the perfect place for your next meeting, group dinner or event!

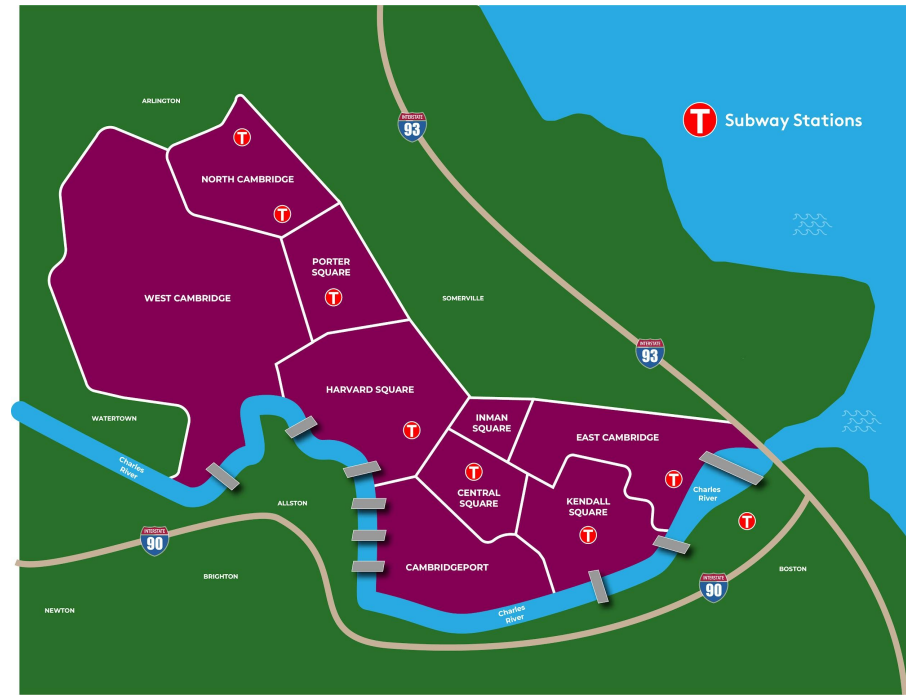
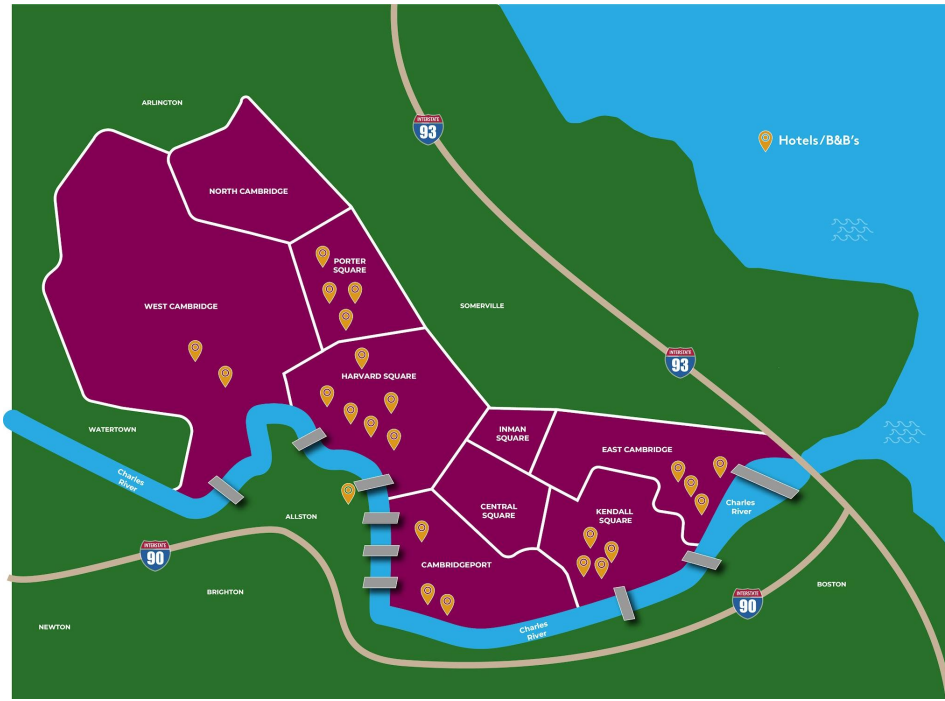
Looking for photos to promote Cambridge on your own marketing materials? Find our favorite photos [here](#) for your use!



Neighborhood Maps

CAMBRIDGE CAMBRIDGE CAMBRIDGE CAMBRIDGE CAMBRIDGE

OFFICE FOR TOURISM



Find more information on our website!

- [Neighborhood Information](#)
- [Getting Around](#)
- [Visitor Center](#), located in Harvard Square and open daily

Sample Itineraries

Find more [here](#)

CAMBRIDGE CAMBRIDGE CAMBRIDGE CAMBRIDGE CAMBRIDGE

OFFICE FOR TOURISM

One Day in Cambridge

Where to Start:

Begin your day in Harvard Square, Cambridge's most famous square. The Red Line subway delivers you into the heart of the iconic neighborhood. When you're ready to see the sights, walk along "Tory Row" on elegant Brattle Street and visit the [Longfellow House Washington's Headquarters](#). Or, opt to take a short bus ride or walk to the 175 acre [Mount Auburn Cemetery](#), the first garden cemetery in the US. Then join an official student led [Harvard University Tour](#) or simply stroll through Harvard Yard and take in the beautiful and historic campus.

In the Afternoon:

The museums in Cambridge cannot be missed, and are plentiful. Hop back on the Red Line and head to Kendall Square, home to the Massachusetts Institute of Technology (MIT). Enjoy an official [tour of the MIT campus](#), also student led, or visit the newly reimagined [MIT Museum](#) offering exhibits, programming and hands-on-activities.

Or, see Boston and Cambridge from a new perspective: the Charles River. [Paddle Boston Canoe & Kayak](#) offers guided tours and rentals of kayaks, canoes or paddleboards. If relaxing on the water is more your speed, enjoy a fully narrated sightseeing cruise with the [Charles River Boat Company](#), departing from the Lechmere Canal Park at [Cambridgeside](#) in East Cambridge.

After Dark:

With over 300 restaurants to choose from, Cambridge's dining scene truly provides something for everyone whether you are in the mood an exotic dish or more traditional New England fare. Or, enjoy a [Food Tour](#) of Harvard Square, Central Square, or Kendall Square . After dinner, don't miss the live music and nightlife venues like the [Middle East](#) or [Cantab Lounge](#) that call Central Square home.



Family Fun in Cambridge

Where to Start:

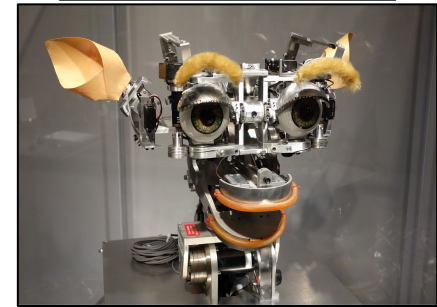
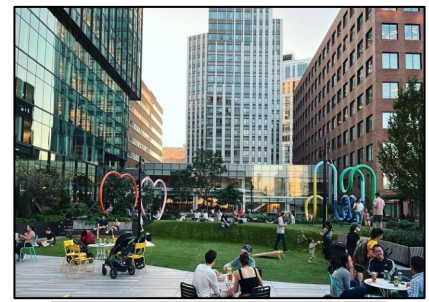
You could easily make an entire day out of a visit to the [Museum of Science](#) (while their address states Boston, the museum is actually located on the Cambridge side of the Charles River!) but a great, quieter alternative for the kiddos who are into all things STEM is the [MIT Museum](#). Or, enjoy making your way alongside the Charles River on Memorial Drive. From 11 a.m.-7 p.m. every Sunday from the end of April until the beginning of November Memorial Drive is closed to vehicular traffic, making for an easy and kid-friendly walk or bike ride to [Magazine Beach](#), featuring lots of shaded picnic areas, a park nature center, plus an outdoor splash pad and olympic sized swimming pool during the summer months.

In the Afternoon:

Treat yourself to an afternoon ice cream at one of Cambridge's famous ice cream shops - [Toscanini's](#) or [Christina's Homemade Ice Cream](#). Get creative by visiting [Made by Me](#), a no-reservations-required-all-ages pottery studio where you can paint mugs, bowls and more. And, while your kiddos may not be thinking about college, take a stroll thru the beautiful and historic Harvard Yard at Harvard University.

After Dark:

Get one last peek at Cambridge and Boston from a different perspective - the Charles River. [Charles River Boat Company](#) offers different sightseeing tours, including a great sunset cruise. Or, check out the schedule of free events at the [Urban Roof Garden](#) in Kendall Square or [Cambridge Crossing](#) in East Cambridge, both of which are known for their family friendly events and outdoor movie nights.



History Lovers

Where to Start:

Cambridge is known as the official birthplace of higher education in America, so don't miss your opportunity to take an official student led [Harvard University Tour](#) and take in all the historic campus, founded in 1636, has to offer.

In the Afternoon:

After perusing all Harvard Square has to offer, stop for lunch at [Harvest](#), one of former resident Julia Child's favorite Cambridge restaurants. Julia lived in Cambridge from 1961 - 2001, and transformed her kitchen into the iconic set where her television show was filmed. (Her home - and famous kitchen - are now privately owned and not open to the public.)

Take a post-lunch stroll down Brattle Street and walk along "Tory Row" and visit the [Longfellow House Washington's Headquarters](#) and Cambridge Common where George Washington first took command of the Revolutionary War troops on July 3, 1775. Or, enjoy [Mount Auburn Cemetery](#), a 175 acre garden cemetery established in 1831 and the first of its kind in the US.

After Dark:

Visit the Old Cambridge Burying Ground and Samuel Stedman Icehouse on a [Harvard Square Ghost Tour](#), or book a tour from the [Charles River Boat Company](#) and enjoy a guided Architecture Boat Cruise leaving from the canal behind [CambridgeSide](#) in East Cambridge.



Science & Innovation Lovers

Where to Start:

Enjoy a guided tour of the [Innovation Trail](#), a fantastic way to experience, learn about and be inspired by four centuries of world-changing breakthroughs and inventions that took place right here in Cambridge. Focused primarily on what happened in Cambridge post-American Revolution, you'll learn how Cambridge is the birthplace of the Tootsie Roll, Polaroid photos, the COVID-19 vaccine and explore the "Most Innovative Square Mile on the Planet"!

In the Afternoon:

Enjoy lunch at the [Miracle of Science Bar + Kitchen](#) in Kendall Square, followed by a student led [MIT Tour](#), or visit the [MIT Museum](#) and [Broad Discovery Center](#), a free museum about biomedical research.

Or, hop on the red line and head down to Harvard Square where you can visit Harvard University's [Collection of Historical Scientific Instruments](#) or [Museum of Natural History](#).

After Dark:

Head back to East Cambridge and visit the [Museum of Science](#) where you can experience the Mugar Omni Theatre, Charles Hayden Planetarium or their newest industry-leading 4D theater.



MICHELIN Dining in Cambridge

CAMBRIDGE CAMBRIDGE CAMBRIDGE CAMBRIDGE CAMBRIDGE

OFFICE FOR TOURISM

Giulia



Neighborhood: Porter Square

Address: 1682 Massachusetts Ave, Cambridge, MA 02138

Phone: 617-441-2800

Website: giuliarestaurant.com

Located between Harvard and Porter Squares, Giulia is an intimate neighborhood trattoria where Chef Michael Pagliarini hand-rolls fresh pasta each morning. Known for its warm brick-and-wood ambiance and impeccable regional Italian cuisine, Giulia delights diners with luxurious small bites, inventive antipasti, and hearty dishes.

Giulia was recognized by the [MICHELIN Guide](#) for its quality service and cooking.

For large groups, Giulia's 'Pasta Table' can accommodate up to 12 seats where guests can enjoy the Chef's Tasting Menu.

Jahunger



Neighborhood: Cambridgeport

Address: 272 Brookline Street, Cambridge, MA 02139

Phone: 617-801-9725

Website: jahunger.com

Jahunger showcases a unique blend of Central Asian influences that shape its distinct culinary identity. Each dish tells a story, offering an immersive experience of Uyghur warmth and generosity. With their award-winning cuisine, Jahunger encourages guests to explore the depth of Uyghur culture through every bite.

The [MICHELIN Guide](#) awarded Jahunger Bib Gourmand honors for outstanding food at a great value.

Moëca



Neighborhood: Porter Square

Address: 1 Shepherd Street, Cambridge, MA 02138

Phone: 617-945-0040

Website: moecarestaurant.com

Moëca is a neighborhood seafood restaurant. Their menu features global flavors that showcase what's in season, now. They are proud to partner with small boat fishermen around the world to bring guests fresh, responsibly sourced seafood.

The [MICHELIN Guide](#) recognized Moëca as a recommended restaurant, celebrating its quality cooking and service.

For groups over 5, call Moëca directly to coordinate.

Oleana



Neighborhood: Inman Square

Address: 134 Hampshire Street, Cambridge, MA 02139

Phone: 617-661-0505

Website: oleanarestaurant.com

Oleana is a farm-to-table restaurant serving food inspired by flavors and traditions in the Eastern Mediterranean.

The [MICHELIN Guide](#) recognized Oleana as a recommended restaurant, celebrating its quality cooking and service.

Oleana offers private event space during the day for 45 guests seated or 75 standing. There is also the option for full evening buyout for up to 65 guests seated or 75 standing. They typically book events up to one year in advance.

PAGU

Neighborhood: Central Square

Address: 310 Massachusetts Ave, Cambridge, MA 02139

Phone: 617-945-9290

Website: gopagu.com



A culmination of Chef Tracy Chang's upbringing, travels and culinary experiences, the menu at PAGU weaves Spanish and Japanese influences into dishes that are authentic, playful and deeply personal. Through PAGU, Chef Chang looks to bring this spirit of community and collaboration to locals and visitors alike.

The [MICHELIN Guide](#) awarded PAGU Bib Gourmand honors for outstanding food at a great value.

PAGU is designed to transform into any space imaginable, day or night. They offer five spaces, both indoor and outdoor, that range in capacity from 20 - 120.

Pammy's



Neighborhood: Central Square

Address: 298 Massachusetts Ave, Cambridge, MA 02139

Phone: 617-945-1761

Website: pammyscambridge.com

Pammy's is a New American restaurant inspired by the feel of an Italian neighborhood trattoria. For husband and wife team Chris and Pam Willis, who live right up the street, Pammy's is an extension of their living room. They've brought together their love of great food, easy hospitality and chic vibe to create a lively space that is welcoming to all looking for a memorable meal.

The [MICHELIN Guide](#) recognized Pammy's as a recommended restaurant, celebrating its quality cooking and service.

Pammy's does not accept reservations for more than 5 guests.

Sumiao Hunan Kitchen



Neighborhood: Kendall Square

Address: 270 Third Street, Cambridge, MA 02142

Phone: 617-945-0907

Website: sumiaohunan.com



Sumiao Hunan Kitchen is a contemporary Chinese restaurant and bar introducing authentic Hunan cuisine. “Sumiao,” Chinese for “sketch,” stays true to its namesake by creatively melding tradition with modernity to bring forth an unmatched dining and social experience that is complemented by a stunning design draped in sentimental works of art. The [MICHELIN Guide](#) awarded Sumiao Hunan Kitchen Bib Gourmand honors for outstanding food at a great value.

Sumiao Hunan Kitchen offers five different areas that can be utilized for meetings or events, and range in capacity from 12 - 80. There is also the option for a full restaurant buyout which can accommodate 128 guests seated or 200 guests standing.

Urban Hearth Kitchen



Neighborhood: North Cambridge

Address: 2263 Massachusetts Ave, Cambridge, MA 02140

Phone: 617-682-7295

Website: urbanhearth.net

Urban Hearth is a fine-dining, farm-to-table experience nestled in a cozy intimate dining room. Guests have the opportunity of eating globally-inspired, locally-sourced dishes crafted by Chef Erin Miller, as well as interacting with her throughout the course of the meal. Urban Hearth also provides a multitude of experiences such as seating at the Chef's Counter, kitchen takeovers to highlight different chefs, as well as themed dinners spotlighting certain cuisines, ingredients and cocktails. The [MICHELIN Guide](#) recognized Urban Hearth as a recommended restaurant, celebrating its quality cooking and service.



Whether a buyout or large party accommodation, Urban Hearth can accommodate 26 guests seated indoor or outdoor (seasonal), or 36 for a cocktail party.

New and Coming Soon in Cambridge

CAMBRIDGE CAMBRIDGE CAMBRIDGE CAMBRIDGE CAMBRIDGE

OFFICE FOR TOURISM

New



CAMBRIDGE CAMBRIDGE CAMBRIDGE CAMBRIDGE CAMBRIDGE CAMBRIDGE CAMBRIDGE CAMBRIDGE CAMBRIDGE CAMBRIDGE

Eastern Edge Food Hall



Neighborhood: Kendall Square

Address: 290 Main Street, Cambridge, MA 02142

Website: www.easternedgefoodhall.com/

Located in the heart of Kendall Square, Eastern Edge Food Hall is a new destination where food, culture, and community converge. From chickpea fritters at Clover, to pho at Viet Citron, and baja fried fish tacos at Lone Star Taco Bar, there is something for everyone to enjoy!

Eastern Edge also offers a customizable private event area of approximately 650 square feet, featuring a mix of soft seating and traditional food hall tables that can accommodate up to 40 guests.

For larger social gatherings, Eastern Edge can accommodate approximately 75 to 100 guests in a more fluid reception format.



Coming Soon!



- The Platform Performing Arts Center and Theater opening September 2026
- American Repertory Theater (A.R.T.) David E. and Stacey L. Goel Center for Creativity & Performance opening early 2027

Hotels

CAMBRIDGE CAMBRIDGE CAMBRIDGE CAMBRIDGE CAMBRIDGE

OFFICE FOR TOURISM

AC Hotel by Marriott Boston Cambridge



Neighborhood: North Cambridge

Address: 10 Acorn Park Drive, Cambridge, MA 02140

Phone: 617-876-6190

Website: achotelbostoncambridge.com

Number of Rooms: 150

On Site Dining: AC Kitchen, AC Lounge

Meeting Space: 5 Event Rooms / 2,579 square feet



Experience this AC Hotel located steps away from the Alewife T Station and minutes from Downtown Cambridge. From a European-inspired continental breakfast to the buzz of the lounge, the AC Hotel stay is designed for those looking to experience the city in a new way. It blends contemporary style with cosmopolitan sophistication.

The innovative lobby, tapas-style lounge and media salons for small, impromptu meetings are made with the modern business traveler in mind. Meeting space features various pre-function and outdoor areas.

AC Hotel by Marriott Boston Cambridge - Cont.

<i>Meeting Room</i>	<i>Square Ft.</i>	<i>Sq. Meters</i>	<i>Capacity</i>				
			<i>Theatre</i>	<i>Classroom</i>	<i>Reception</i>	<i>Banquet</i>	<i>Conference</i>
Alewife AB	1886	175	120	60	120	120	44
Alewife A	943	88	60	30	60	60	24
Alewife B	943	88	60	30	60	60	24
Pre-function Space	1036	96	-	-	96	-	-
Discovery Boardroom	294	27	-	-	-	-	10
Forrester Boardroom	273	25	-	-	-	-	10
Media Salon	126	12	-	-	-	-	9
Outdoor Terrace	1036	96	-	-	70	-	-



Boston Marriott Cambridge



Neighborhood: Kendall Square

Address: 50 Broadway, Cambridge, MA 0212

Phone: 617-494-6600

Website: marriottcambridge.com

Number of Rooms: 438 Rooms / 11 Suites

On Site Dining: M Club Restaurant & Lounge, Element 50

Meeting Space: 11 Event Rooms / 11,853 square feet

Boston Marriott Cambridge exudes modern style and exceptional service in the unparalleled location of trendy Kendall Square. Just steps from the Kendall Square T station of the Red Line, the hotel offers easy access to the rest of Cambridge but is also just two subway stops away from Boston. Guest rooms and suites offer spacious bedroom and bathroom areas, ergonomic work spaces and high speed internet access. Plan meetings or events in nearly 12,000 square feet of versatile event space, and then unwind in a modern guest room or suite with great views of Boston and the Charles River.

Their newly renovated lobby and access to the “T” coming Spring/Summer 2026!



Boston Marriott Cambridge - Cont.

<i>Meeting Room</i>	<i>Square Ft.</i>	<i>Sq. Meters</i>	<i>Capacity</i>				
			<i>Theatre</i>	<i>Classroom</i>	<i>Reception</i>	<i>Banquet</i>	<i>Conference</i>
Grand Ballroom	9728	904	1150	515	1400	600	-
Salon 1	1188	110	100	50	40	70	40
Salon 2	484	45	30	20	20	20	12
Salon 3	3192	297	350	180	475	240	-
Salon 4	3192	297	350	180	475	240	-
Salon 5	484	45	30	20	20	20	12
Salon 6	704	65	60	30	40	50	25
Salon 7	484	45	30	20	20	20	12
Discovery	675	63	66	36	50	40	24
Endeavor	675	63	66	36	50	40	24
Enterprise	575	53	50	27	40	30	16
Kendall Boardroom	200	19	-	-	-	-	10
	11853	2005					

The Charles Hotel



Neighborhood: Harvard Square

Address: 1 Bennett Street, Cambridge, MA 02138

Phone: 800-882-1818/617-864-1200

Website: charleshotel.com

Number of Rooms: 303 Rooms / 54 Suites

On Site Dining: Henrietta's Table, Regattabar, Noir, Bar Enza, One Reason Garden Bar, and Pronto

Meeting Space: 13 Event Rooms / 18,000 square feet

Located in the heart of Harvard Square, The Charles Hotel is the smart place to stay. Enjoy seasonal events, onsite dining options, an outdoor beer garden, jazz club, and state-of-the-art fitness center. The Charles is a member of Preferred Hotels and Resorts, and a AAA Four Diamond award-winning hotel.

The hotel can customize a space ideal for any event needs. The facility boasts 17 event rooms, which can accommodate gatherings from a small board of directors meeting to a reception for 600 guests. The outdoor courtyard is also available for gatherings, and every event has the benefit of the hotel's exemplary full services.

The Charles Hotel

<i>Meeting Room</i>	<i>Square Ft.</i>	<i>Sq. Meters</i>	<i>Theatre</i>	<i>Classroom</i>	<i>Reception</i>	<i>Banquet</i>	<i>Conference</i>
Kennedy	1881	175	160	70	150	120	40
Kennedy A	957	89	80	35	80	60	22
Kennedy B	957	89	80	35	80	60	22
Brattle	864	80	60	30	60	50	20
Longfellow	1568	146	120	55	125	100	36
Longfellow A	784	73	60	25	70	50	20
Longfellow B	784	73	60	25	70	50	20
Hamilton	418	39	40	18	40	30	14
Charles Ballroom	4730	439	550	300	600	400	-
Pre Assembly A	1782	165	-	-	180	1	1
Comstock	702	65	50	20	50	40	22
Agassiz	696	65	50	25	50	40	25
Pre Assembly B	612	57	-	-	30	-	-
Compton	540	50	50	25	40	30	25
Rogers	504	47	50	20	40	30	25
Stratton	504	47	50	20	40	30	25
Leverett Board Room	300	28	-	-	-	10	10
Doriot Board Room	260	24	-	-	-	10	10
Walker Board Room	260	24	-	-	-	10	10
Regattabar	2805	261	225	150	225	210	40

Courtyard by Marriott Boston-Cambridge



Neighborhood: Cambridgeport

Address: 777 Memorial Drive, Cambridge, MA 02139

Phone: 866-236-2472

Website: cambridgecourtyard.com

Number of Rooms: 216 Rooms / 2 Suites

On Site Dining: Bisuteki Tokyo Japanese Steakhouse & Sushi Bar

Meeting Space: 8 Event Rooms / 6,722 square feet

Nestled on the banks of the Charles River sits the Courtyard by Marriott Boston-Cambridge. Whether you're visiting for work or pleasure, discover modern comforts for today's traveler. Treat yourself to on-site dining at Bisuteki Tokyo and then retreat to your spacious room or suite overlooking the bright Boston skyline. Or, squeeze in a workout at the 24 hour fitness center.



Host meeting or event one of our eight event rooms and let our professional caterers plan the perfect menu for the event. The Waterfront Ballroom space allows for sweeping views of the Charles River with floor to ceiling windows.

DoubleTree Suites by Hilton Boston



Neighborhood: Cambridgeport

Address: 400 Soldiers Field Road, Boston, MA 02134

Phone: 800-222-8733

Website: hilton.com

Number of Rooms: 308 Rooms

On Site Dining: Boathouse 400, Fusion Lounge, Scullers Jazz Club, Over the Charles

Meeting Space: 7 Event Rooms / 8,325 square feet

Located along the scenic Charles River, the DoubleTree Suites by Hilton Boston overlook both the Boston and Cambridge skylines. The hotel offers easy access to Harvard Square as well as two of the area's major thoroughfares: the Massachusetts Turnpike (I-90) and Storrow Drive. You can even take a complimentary shuttle to Harvard Square and downtown Boston. Enjoy on site parking, two restaurants and a business center. Scullers Jazz Club has been voted Boston's #1 Jazz Club by the *Improper Bostonian* and is located on the first floor of the hotel.

Meetings and event planners have their choice between 7 different spaces and over 8,300 square feet of space.

Fairfield Inn & Suites Boston Cambridge



Neighborhood: East Cambridge

Address: 215 Monsignor O'Brien Highway, Cambridge, Ma 02141

Phone: 617-621-1999

Website: fairfieldbostoncambridge.com

Number of Rooms: 123 Rooms

On Site Dining: N/A

Meeting Space: N/A

At Fairfield Inn & Suites by Marriott Boston Cambridge, smart, beautifully appointed guest rooms are perfectly matched for today's connected, tech-savvy lifestyles. Experience ergonomic workstations, sleek design touches and modern baths that have granite countertops and glass-walled showers. You can also expect public transit options right around the corner and a complimentary breakfast buffet.

Fairfield Inn & Suites Boston Cambridge makes it easy to travel like you live: entirely on your own terms.



Freepoint Hotel



Neighborhood: West Cambridge

Address: 220 Alewife Brook Parkway, Cambridge, Ma 02138

Phone: 617-491-8000

Website: freepointhotel.com

Number of Rooms: 121 Rooms

On Site Dining: Freepoint Kitchen and Cocktails

Meeting Space: 3 Event Spaces

Freepoint Hotel puts guest within easy reach of Cambridge's most desirable attractions, restaurants and hubs for business and technology. The hotel gives guests a place where they can feel free to be themselves, while surrounded by chic design. One example is the the Freepoint Kitchen and Cocktails by Matthew Gaudet, which features global flavors and casual fare.

Freepoints amenities include a complimentary shuttle service, free WI-FI throughout the hotel and even a heated, secret garden with a firepit.



Freepoint Hotel

<i>Meeting Room</i>	<i>Square Ft.</i>		<i>Theatre</i>	<i>Classroom</i>	<i>Reception</i>	<i>Banquet</i>
The Secret Garden	-		-	-	25	-
The Lounge	-		-	-	10	-
The Dining Room	-		-	-	10	-

Hampton Inn Boston/Cambridge



Neighborhood: East Cambridge

Address: 191 Monsignor O'Brien Highway, Cambridge, Ma 02141

Phone: 617-494-5300

Website: bostoncambridge.hamptoninn.com

Number of Rooms: 114 Rooms

On Site Dining: N/A

Meeting Space: N/A

The Hampton Inn Boston/Cambridge is a superior first class hotel that boasts highly personalized service coupled with elegantly styled guest rooms. It offers deluxe continental breakfast, high-speed internet access and parking - all free with your stay.

Just minutes from Boston and across from public transportation, the hotel makes traveling a breeze. Guests can conduct business and still have time to explore the historic treasures of Boston & Cambridge.



Harvard Square Hotel



Neighborhood: Harvard Square

Address: 110 Mt. Auburn Street, Cambridge, Ma 02138

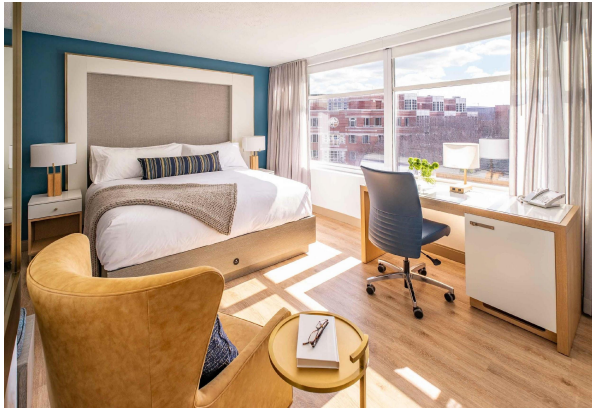
Phone: 800-458-5886

Website: harvardsquarehotel.com

Number of Rooms: 73 Rooms

On Site Dining: N/A

Meeting Space: N/A



Friendly, personalized service and modern amenities make Harvard Square Hotel an ideal retreat for business and leisure travelers. This boutique hotel's affordable guest rooms have sophisticated decor and top-notch features like mini-refrigerators, flat-screen TV's, sleek bathrooms and pillow-top beds. It's easy to stay productive thanks to property-wide WI-FI, spacious in-room work desks and a lobby cafe. Right outside, guests will find a self-parking garage.

Next to Harvard University and the Charles River, the hotel is surrounded by local shops, cafes and Harvard Square's nightlife. Downtown Boston is also less than ten minutes away.

Holiday Inn Express & Suites



Neighborhood: East Cambridge

Address: 250 Monsignor O'Brien Highway, Cambridge, Ma 02141

Phone: 800-458-5886

Website: hiecambbridge.com

Number of Rooms: 98 Rooms / 14 Suites

On Site Dining: N/A

Meeting Space: N/A

Holiday Inn Express & Suites' convenient Cambridge location is just minutes from Downtown Boston via the train at nearby Lechmere Station. A complimentary American breakfast awaits your arrival. Indulge in the hotel's famous cinnamon rolls as well as a variety of hot and cold foods.

Our "Great Room" also has 24 hour coffee and complimentary cookies in the evening. All accommodations include a microwave, mini-fridge, coffee maker and high-speed wireless internet access.



Hotel 1868



Neighborhood: Porter Square

Address: 1868 Massachusetts Ave, Cambridge, Ma 02140

Phone: 617-499-2998

Website: hotel1868.com

Number of Rooms: 50 Rooms

On Site Dining: N/A

Meeting Space: 1 Event Room / 250 square feet

Hotel 1868 welcomes guests with a contemporary style, outstanding service, exception value and a location that's a stone's throw from the Porter Square Transit Station. Aesthetically influenced by the machine age and industrial design period, Hotel 1868 showcases well-thought-out accommodations. It has Serta Presidential queen beds, smart TV's and complimentary WI-FI. Before grabbing a coffee and pasty from next door's Cafe Nero, you can challenge yourself to a work out in the hotels fitness center. You can also create and collaborate in the hotel meeting room, which includes modern audiovisual facilities. When you step outside the hotel, explore all that Cambridge has to offer and enjoy easy access to Boston.



Hotel 1868

<i>Meeting Room</i>	<i>Square Ft.</i>	<i>Sq. Meters</i>	<i>Theatre</i>	<i>Classroom</i>	<i>Reception</i>	<i>Banquet</i>	<i>Conference</i>
Meeting Room	250	23	-	-	-	-	10
	250	23					

Hotel Veritas



Neighborhood: Harvard Square

Address: 1 Remington Street, Cambridge, Ma 02138

Phone: 617-520-5000

Website: thehotelveritas.com

Number of Rooms: 30 Rooms

On Site Dining: N/A

Meeting Space: N/A



This “sleek, pleasantly quirky hotel achieves what all boutique hotels strive for,” says *The Boston Globe*. “A place where small feels interesting and intimate, not limiting or lacking.” Located on the eastern edge of Harvard Square, Hotel Veritas offers intimate service in a cool Cantabrigian setting. The look and feel of Hotel Veritas is very current, but with a nod toward the hotel’s traditional and historic neighborhood.

Elegant guest rooms are designed with the fine detailing of an old New England residence. Furnishings are interesting contemporary pieces with rich fabrics and textures. Accommodations include internet access, domestic telephone calls, N'Espresso coffee, juices, sodas and bottled native water.

Hyatt Regency Cambridge



Neighborhood: Cambridgeport

Address: 575 Memorial Drive, Cambridge, Ma 02139

Phone: 617-492-1234

Website: cambridgehyatt.com

Number of Rooms: 479 Rooms

On Site Dining: Paperback Tavern, Paperback Provisions

Meeting Space: 8 Event Spaces / 32,860 square feet

The beauty of the Charles River doesn't stop at the end of the river - it extends 16 stories up with the Hyatt Regency Cambridge. This pyramid-shaped hotel is an iconic imprint on the famed Boston skyline. Enjoy a room with an outdoor balcony, some me-time on the hotel's sundeck and patio and regional cuisine at Paperback Tavern, with its spectacular river views.

The hotel also offers a complimentary shuttle to popular locations, complimentary bike rentals, and a 24-hour fitness center.

Hyatt Regency Cambridge

Meeting Room	Square Ft.	Sq. Meters	Capacity				
			Theatre	Classroom	Reception	Banquet	Conference
Amesbury	7008	651	850	450	850	630	-
Pre Function Space	1300	121	-	-	-	-	-
Porter Square	1150	107	130	60	130	100	40
Harvard Square	1150	107	130	60	130	100	40
Inman Square	897	83	100	50	100	80	30
Central Square	897	83	100	50	100	80	30
Kendall Square	897	83	100	50	100	80	30
Riverside Pavillion	2800	260	-	-	300	220	-
Courtyard	7637	710	-	-	300	300	-
Oxford	364	34	-	-	-	-	12
Brattle	338	31	-	-	-	-	12
Remington	651	60	70	30	70	50	20
Library Terrace	1509	140	-	-	150	80	-
Mt. Auburn Ballroom	3262	303	-	-	300	180	-
Charles View Ballroom	3000	279	300	160	400	200	-
	32860	3053					

The Kendall Hotel



Neighborhood: Kendall Square

Address: 350 Main Street, Cambridge, Ma 02142

Phone: 617-577-1300

Website: kendallhotel.com

Number of Rooms: 73 Rooms / 4 Suites

On Site Dining: Black Sheep Restaurant + Patio

Meeting Space: 4 Event Spaces / 1,376 square feet



The Kendall Hotel is located where Cambridge meets Boston: steps from the Kendall/MIT Transit Station. It offers everything the weekend or business traveler could need, including a touch of history. Built in 1895, the hotel was originally a Victorian Firehouse. Today a balance of old and new is evident throughout the hotel, including the wide variety of guest rooms or one-bedroom suites. All guest rooms have free Wi-Fi and elegant, antique furnishings. A breakfast buffet, wine hour in the rooftop retreat and use of Cambridge Athletic Club's facilities are included with your stay. Their onsite dining, Black Sheep Restaurant + Patio, is now open as well! For your business or social events, meeting rooms with tech capabilities are also available.

The Kendall Hotel

<i>Meeting Room</i>	<i>Square Ft.</i>	<i>Sq. Meters</i>	<i>Theatre</i>	<i>Classroom</i>	<i>Reception</i>	<i>Banquet</i>	<i>Conference</i>
Black Sheep Restaurant	323	30	-	-	60	-	-
Black Sheep Patio	323	30			20	-	-
Rooftop Retreat	418	38	-	-	35	20	-
Engine 7	312	29	-	-	35	-	15
	1376	127					

Kimpton Marlowe Hotel



Neighborhood: East Cambridge

Address: 25 Edwin H. Land Blvd, Cambridge, Ma 02141

Phone: 800-825-7040

Website: hotelmarlowe.com

Number of Rooms: 222 Rooms / 14 Suites

On Site Dining: Bambara Kitchen + Bar, Cambridge Lobby Bar

Meeting Space: 6 Rooms / 12,414 square feet



Rated by Conde Nast Traveler as the “#3 Hotel in Boston”, Kimpton Marlowe Hotel is a uniquely smart choice when traveling anywhere in the Boston area. Newly renovated meeting and common spaces, suites and event spaces plus hospitality and luxury make this boutique hotel both exceptional and convenient. Located in East Cambridge, Hotel Marlowe is just minutes from Harvard Square, MIT, downtown Boston, Logan Airport and more. The Kimpton Marlowe hotel is both accessible and pet-friendly. Guests can enjoy complimentary kayaks, paddleboards, public bikes, yoga mats and fitness classes. Inside the hotel, Bambara Kitchen + Bar is open for indoor and outdoor dining, pick up or delivery.

Le Méridien Cambridge - MIT



Neighborhood: Central Square

Address: 20 Sidney Street, Cambridge, MA 02139

Phone: 617-577-0200

Website: lemeridiencambridge.com

Number of Rooms: 210 Rooms / 14 Suites

On Site Dining: Amuse Restaurant & Bar

Meeting Space: 8 Rooms / 17,725 square feet

Le Méridien Cambridge - MIT has luxurious guest rooms and suites that offer a place of sanctuary and unmatched comfort. The hotel's 24-hour fitness center is fully equipped. At its chic restaurant, Amuse, you can treat yourself to classic French fare. Situated in the heart of University Park, Le Méridien is also surrounded by a culturally diverse area known for its cuisine. Central Square, a designated Cultural District by the Massachusetts Cultural Council, abounds with public art. Central Square also has unique, niche shopping options, and it is easily accessible from Logan Airport. Another highlight is that the hotel is minutes from the heart of Boston.



Porter Square Hotel



Neighborhood: Porter Square

Address: 1924 Mass Ave, Cambridge, MA 02140

Phone: 888-252-0880

Website: theportersquarehotel.com

Number of Rooms: 59 Rooms / 9 Suites

On Site Dining: Margeaux Supper Parlor

Meeting Space: N/A



Located moments away from Harvard Square, the Porter Square Hotel brings a fresh and exciting energy to Cambridge. As soon as you step into the bright, airy lobby, you'll see how the modern design blends the boutique hotel atmosphere with the comfort every traveler needs. An open patio and garden are the perfect spots for relaxing in the afternoon sun. Before exploring the city, head into Margeaux Supper Parlor, where New England meets New Orleans. Margeaux is always buzzing with both locals and hotel guests for breakfast, brunch, and dinner. For guests' corporate meetings and private parties, The Porter Square Hotel also offers intimate gathering spaces.

Residence Inn Boston Cambridge



Neighborhood: Kendall Square

Address: 6 Cambridge Center, Cambridge, MA 02142

Phone: 617-547-8504

Website: cambridgeresidenceinn.com

Number of Rooms: 221 Suites

On Site Dining: Theory Bar & Lounge

Meeting Space: 2 rooms / 1,456 square feet



The Residence Inn by Marriott Boston Cambridge is located two subway stops from Harvard University, less than a mile from Massachusetts General Hospital, and within walking distance of MIT and major Cambridge biotech companies. The hotel has everything you need to thrive on long stays. Set a pace that suits you via guest suites designed with ample work space. The suites also have a fully equipped kitchen, supremely comfortable bedding and free high-speed Wi-Fi. To stay connected, hit the hotel's social events. And to stay relaxed, take advantage of the fitness center and a complimentary hot breakfast each morning.

Residence Inn Boston Cambridge

<i>Meeting Room</i>	<i>Square Ft.</i>	<i>Sq. Meters</i>	<i>Theatre</i>	<i>Classroom</i>	<i>Reception</i>	<i>Banquet</i>	<i>Conference</i>
DOC Edgerton Room	1104	103	100	52	100	60	40
Executive Boardroom	352	33	-	-	-	-	12
	1456	135					

Royal Sonesta Hotel Boston



Neighborhood: East Cambridge

Address: 40 Edwin H. Land Blvd, Cambridge, MA 02142

Phone: 800-766-3782

Website: sonesta.com/boston

Number of Rooms: 400 Rooms

On Site Dining: Scull and Keel, MonteVerdi, STUDIO Cafe & Bakery

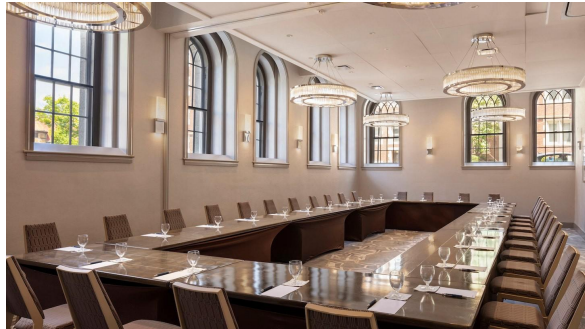
Meeting Space: 18 rooms / 28,000 square feet



Located on the Cambridge side of the Charles River, the Royal Sonesta is a AAA approved Four Diamond Hotel. It offers breathtaking views, regional cuisine and luxury accommodations chock full of contemporary art. All 400 guest rooms are currently going under renovation, including a new imagined riverside restaurant.

For those looking to experience the best Cambridge has to offer, there are many shops, museums and historical sites conveniently located near the Royal Sonesta. This upscale hotel also overlooks the Charles River as well as the stunning Boston city skyline.

Sheraton Commander Hotel



Neighborhood: Harvard Square

Address: 16 Garden Street, Cambridge, MA 02138

Phone: 617-547-4800

Website: [sheraton.com/commander](https://www.sheraton.com/commander)

Number of Rooms: 150 Rooms / 24 Suites

On Site Dining: Nubar

Meeting Space: 5 Rooms / 5,443 square feet

Built in 1927, the AAA Three Diamond rated Sheraton Commander Hotel has long been a landmark in Cambridge. With a quintessential location adjacent to Harvard Square, guests have easy access to Harvard University, the Harvard Art Museum, and the nearby downtown Boston. The hotel features 175 guest rooms, all currently being renovated to enhance ADA compliance throughout the hotel. Each room is complete with flat-panel LCD televisions, crisp bedding, and the interSheraton Sweet Sleeperbed made exclusively for Sheraton. You can stay connected with complimentary free high-speed internet access and a lobby equipped with Microsoft products. During your stay, also make sure to enjoy the hotel's seasonal and approachable neighborhood fare at Nubar Restaurant.

907 Main



Neighborhood: Central Square

Address: 907 Main Street, Cambridge, MA 02139

Phone: 617-300-0956

Website: 907main.com

Number of Rooms: 67 Rooms

On Site Dining: Althea, Saigon Babylon

Meeting Space: N/A

Cambridge's newest hotel, 907 Main—now part of the Lark Hotels portfolio—opened in the fall of 2020. Inspired by Margaret Fuller and the transcendentalist movement, 907 Main features exclusive offerings and partnerships that provide a sophisticated and refined stay while inspiring guests as well as locals to embrace the rebel within. 907 Main is in the heart of Central Square.



Inns, B&B's & Common Houses

CAMBRIDGE CAMBRIDGE CAMBRIDGE CAMBRIDGE CAMBRIDGE

OFFICE FOR TOURISM

A Cambridge House Inn



Neighborhood: West Cambridge

Address: 2218 Massachusetts Ave, Cambridge, MA 02140

Phone: 617-491-6300

Website: acambridgehouse.com

Number of Rooms: 33 Rooms

On Site Dining: Continental Breakfast

Meeting Space: N/A



A Cambridge House Inn is a lovely turn of the century B&B offering both Victorian and contemporary-style rooms. Many of the Victorian rooms have fireplaces, and both room types are equipped with private baths, cable TV and AC during summer months. Rates include continental breakfast, Wi-Fi and first come first serve parking. The inn is located just outside of Porter Square and within walking distance to the subway. It allows easy access to Harvard Square and Boston as well as Tufts University and MIT.

A Friendly Inn at Harvard



Neighborhood: Harvard Square

Address: 1673 Cambridge Street, Cambridge, MA 02138

Phone: 617-547-7851

Website: afinow.com

Number of Rooms: 13 Rooms / 4 suites

On Site Dining: Continental Breakfast

Meeting Space: N/A

A Friendly Inn at Harvard is a Queen Anne-style house conveniently located two blocks from Harvard Square and the subway to downtown Boston and the airport. Across the street, enjoy a tennis court, swimming pool, library and museums. Within walking distance, discover movie theaters, restaurants, cafes, bookstores, brand-named stores and unique local shopping options. All rooms offer private baths, AC, TV and phone. Free parking, continental breakfast and 24-hour assistance are available to guests at A Friendly Inn. Chinese and French are also spoken at the inn.

Cambridge Common House

Neighborhood: Harvard Square

Address: 2 Garden Street, Cambridge, MA 02138

Phone: 617-798-9556

Website:

larkhotels.com/massachusetts/cambridge/cambridge-common-house

Number of Rooms: 16 Rooms / 1 suite

On Site Dining: Complimentary continental breakfast

Meeting Space: N/A



At Cambridge Common House, charm meets modern ease just steps from Harvard Square. With a host of thoughtfully outfitted rooms and suites along with amenities like private patios and working gas fireplaces, Cambridge Common House crafts the perfect stay. Located just 5 minutes from Harvard in the newly renovated historic Howe house, the hotel has been a gathering place for students, artists, and intellectuals for over two centuries. Explore the world-class dining, shopping, entertainment, and cultural landmarks of the greater Boston area at Cambridge Common House.

Irving House at Harvard



Neighborhood: Harvard Square

Address: 24 Irving Street, Cambridge, MA 02138

Phone: 877-547-4600

Website: irvinghouse.com

Number of Rooms: 44 Rooms

On Site Dining: Continental Breakfast

Meeting Space: N/A



Irving House at Harvard has welcomed travelers to Cambridge since 1945. Irving House is a guesthouse on a quiet residential street two blocks from Harvard Yard. Their rates include Wi-Fi, off-street parking, delicious breakfast and afternoon tea. Food at Irving House is locally sourced as much as possible, and their operations are both environmentally and family friendly. Their room types include economical options with shared baths as well as family rooms with bunk beds and private baths.

Prospect Place Bed & Breakfast



Neighborhood: Central Square

Address: 112 Prospect Street, Cambridge, MA 02138

Phone: 800-769-5303

Website: prospectpl.com

Number of Rooms: 1 Room / 2 Suites

On Site Dining: Continental Breakfast

Meeting Space: N/A



Prospect Place Bed & Breakfast is a historic residence dating back to the mid-nineteenth century. Prospect Place has been restored and maintained in the spirit of its original conception and building. Bed and breakfast guests are accepted by advance reservation on a first-come, first-served basis. The property is furnished with eclectic antiques and unique Persian rugs, and is a short walk from Harvard University and Massachusetts Institute of Technology.

Other Meeting Venues

CAMBRIDGE CAMBRIDGE CAMBRIDGE CAMBRIDGE CAMBRIDGE

OFFICE FOR TOURISM

American Academy of Arts & Sciences



Neighborhood: Porter Square

Address: 136 Irving Street, Cambridge, MA 02138

Phone: 617-576-5000

Website: amacad.org

Norton's Woods Conference Center at the American Academy of Arts & Sciences is a superior facility that can be tailored to your individual needs. Its spacious interior combines the charm of an English country house with a quiet luxury and elegance all its own.



A unique site for your next occasion, the Center can accommodate over 250 people for dinner and 350 for receptions. It is conveniently located in the heart of Cambridge on a secluded five-and-a-half acre wooded estate.

Conference facilities include executive conference rooms, 225-seat auditorium, three separate dining rooms, spacious atrium and hearth, and state-of-the-art audiovisual and communication systems. Their experienced and knowledgeable staff ensures superlative service with a disciplined attention to detail.

Charles River Boat Company



Neighborhood: East Cambridge

Address: 100 Cambridgeside Place, Cambridge, MA 02138

Phone: 617-621-3001

Website: charlesriverboat.com

The Charles Riverboat Company is Boston and Cambridge's only riverboat company offering private charters and sightseeing cruises along both the Charles River and Boston's Inner Harbor.



The Charles Riverboat Company has a fleet of six vessels available for private charter. They provide a unique setting for any corporate or social event, and capacities range from 2-145 depending on the vessel. Cocktail or Dinner Cruises can be customized to suit your group with a variety of available menus, bar packages and dockage locations around Boston and Cambridge.

First Street Market



Neighborhood: East Cambridge

Address: 57 First Street, Cambridge, MA 02138

Email: hello@firststreetmkt.com

Website: ambacambridge.com/first-street-market

A new event and meeting space in Cambridge! Located next to Amba at 57 First Street is First Street Market. The space will be multipurpose - hosting farmers markets, maker markets, and events and meeting space with full catering available from Cambridge Street Hospitality Group as well as a 12 seat bar.

Gutman Conference Center

Neighborhood: Harvard Square

Address: 6 Appian Way, Cambridge, MA 02138

Phone: 617-495-4225

Website: [Gutman Conference Center](#)



The Gutman Conference Center is a full-service conference and meeting facility ideally located in the heart of Harvard Square. You can find the center on the ground floor of the Monroe C. Gutman Library at the Harvard Graduate School of Education. The Gutman Conference Center is just minutes from hotels, restaurants, public transportation, parking facilities and in the very heartbeat of the Harvard academic community.

Amenities include logistical consultation, catering, and audiovisual equipment rentals and support. The center can accommodate capacities from 65 - 350 attendees.

Harvard Art Museums

Neighborhood: Harvard Square

Address: 32 Quincy Street, Cambridge, MA 02138

Phone: 617-495-9400

Website: harvardartmuseums.com



Discover the rich collections of the Fogg, Busch- Reisinger and Arthur M. Sackler Museums. They are united in a state-of-the-art facility, Harvard Art Museums. The three museums' landmark building on the Harvard University campus provides spaces for research, teaching and learning – all of which are at the heart of their mission. Visitors can learn about research connected to the objects on display, explore new ideas in the galleries and observe leading conservators at work. In the unique Art Study Center, visitors have hands-on experiences with a wide range of objects from the collections.

There are five different areas that can be utilized for meetings or events, and range in capacity from 80 - 400.

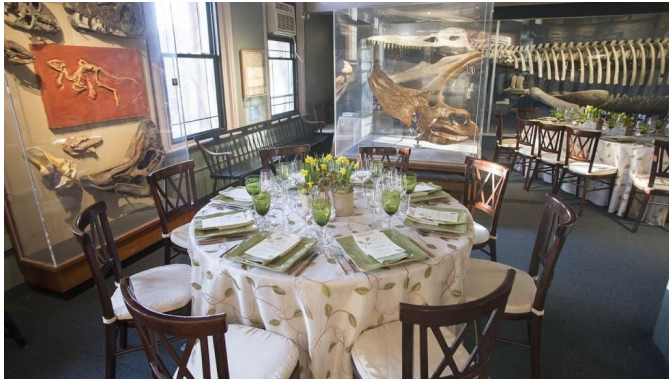
Harvard Museum of Natural History

Neighborhood: Harvard Square

Address: 26 Oxford Street, Cambridge, MA 02138

Phone: 617-495-3045

Website: hmnh.harvard.edu/



The Harvard Museum of Natural History provides a marvelous setting for a variety of events. The Museum of Natural History has 17 galleries with fascinating exhibitions. They form the perfect backdrop for a distinctive reception or dinner.

All Harvard Museum of Natural History event rentals include full access to special exhibitions and galleries like the Glass Flowers gallery as well as the zoological and mineralogical galleries.

Event & meeting capacities range from 30 - 400+.

MIT Museum

Neighborhood: Kendall Square

Address: Gambrill Center, 314 Main Street, Cambridge, MA 02142

Phone: 617-253-5927

Website: mitmuseum.mit.edu



The museum offers a number of options to suit your guest list and event type. The ground floor lobby, featuring inspired architectural detail is a perfect event destination, while the second-floor dedicated event room, equipped with state-of-the-art AV equipment is ideal for daytime or evening meetings or functions. Or opt to rent the entire museum for an awe-inspiring backdrop to an unforgettable evening.

Guests will have access to galleries, art installations, and their dramatic *Exchange* program space with soaring ceilings and stadium seating. Capacities range from 70–700.

Multicultural Arts Center



Neighborhood: East Cambridge

Address: 41 Second Street, Cambridge, MA 02141

Phone: 617-253-5927

Website: multiculturalartscenter.org

The Multicultural Arts Center is a non-profit corporation that was founded as an arts center focused on helping diverse populations better understand one another. Since its founding in 1978, the center has presented multicultural visual and performing arts programs. It educates the community about diversity and make its spaces available to artists and groups that might not otherwise have access to a professionally equipped facility.

At the Multicultural Arts Center, a theater is available for private rentals. Perfect for any occasion, the center also includes two galleries and a kitchen that is available for weddings, bar mitzvahs, private parties, corporate gatherings and non-profit events. Capacities range from 40 - 200.

Museum of Science



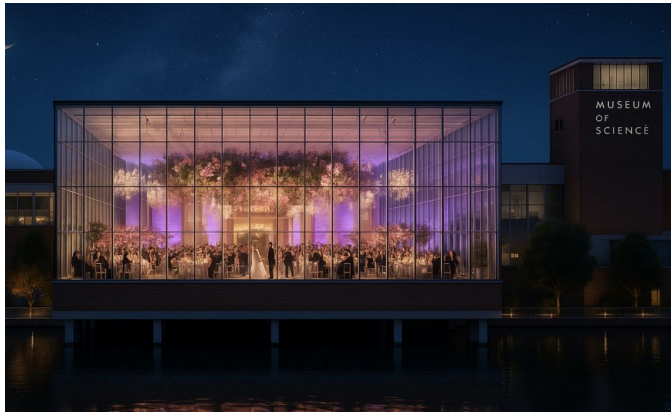
Neighborhood: East Cambridge

Address: Science Park, Boston, MA 02114

Phone: 617-723-2500

Website: mos.org/events/private-events

The Museum of Science lends itself to a wide range of events: business meetings, private or corporate receptions, cocktail parties, banquets, weddings, christenings, showers, bridal luncheons, rehearsal dinners, bar and bat mitzvahs, and more. Event and meeting capacity goes up to 4,500 attendees with an entire museum buyout.



The museum's brand new Public Science Common, opening in Fall 2026, is a one of a kind venue with access to Boston's most coveted views. A true departure from the typical social or corporate setting, the museum offers a moveable feast of engaging experiences. Permanent attractions are accented by an ever-changing cavalcade of traveling exhibits, films and shows.

The Foundry



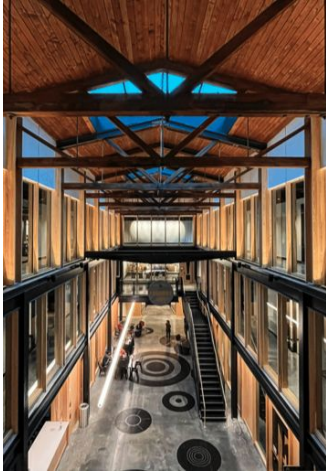
Neighborhood: Kendall Square

Address: 101 Rogers Street, Cambridge, MA 02138

Phone: 857-998-2063

Website: cambridgefoundry.org

The Foundry, a brick and timber frame industrial building built in 1890, has been repurposed into a creative, innovative and collaborative multipurpose space.



Featuring four different event spaces, each space offers customizable layouts to align with your event needs. Event spaces include the Performance Space, the Community Hall, the large Multi-Purpose Room and the Yard. Private and public rentals are available.

Capacities run from 300 standing to 175 seated, include outdoor spaces, a “Food lab”, skylights, AV equipment and more.

CAMBRIDGE CAMBRIDGE CAMBRIDGE CAMBRIDGE CAMBRIDGE